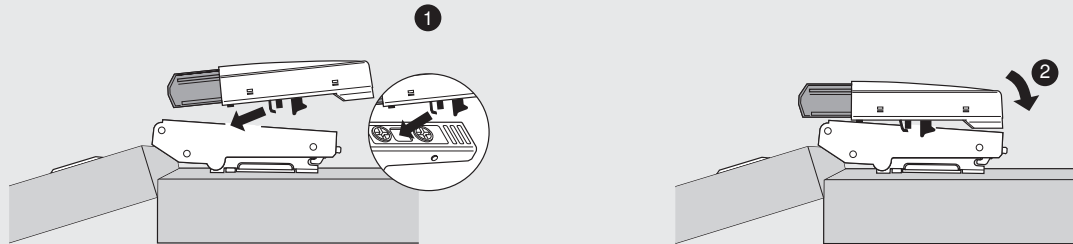
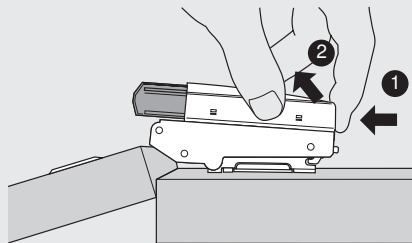


# BLUMOTION 973A

## Montage / Assembly / Montage



## Demontage / Removal / Démontage



Technische Änderungen vorbehalten / Subject to technical changes without notice / Modifications techniques réservées

Julius Blum GmbH  
Beschlägefabrik  
A-6973 Höchst, Austria  
Tel.: +43/5578/705-0  
Fax: +43/5578/705-44  
E-Mail: [info@blum.com](mailto:info@blum.com)  
[www.blum.com](http://www.blum.com)

 **blum**<sup>®</sup>

BAUxxxxxxxxx IDX: 00 IDNR: xxx.xxx.x MA-216/0ML 10.05